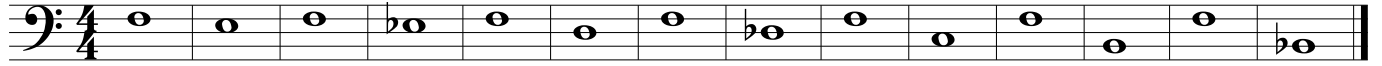


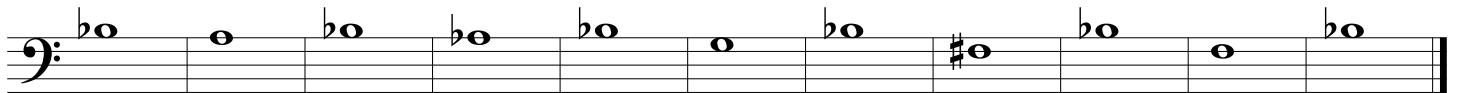
Tone Builders

Euphonium

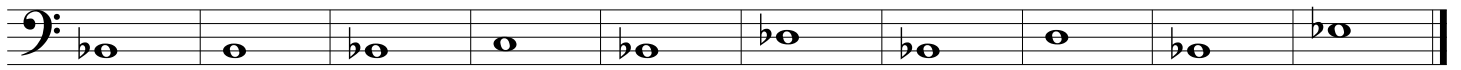
①



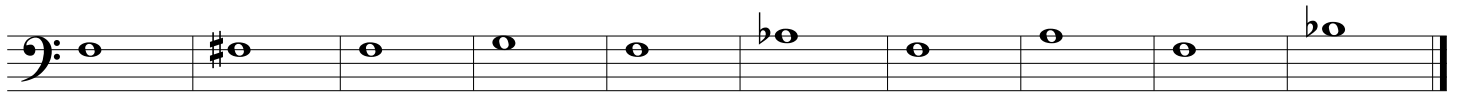
②



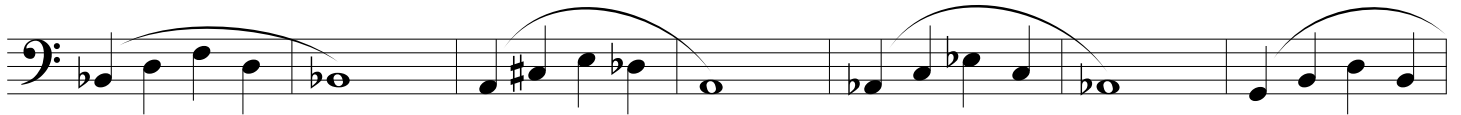
③



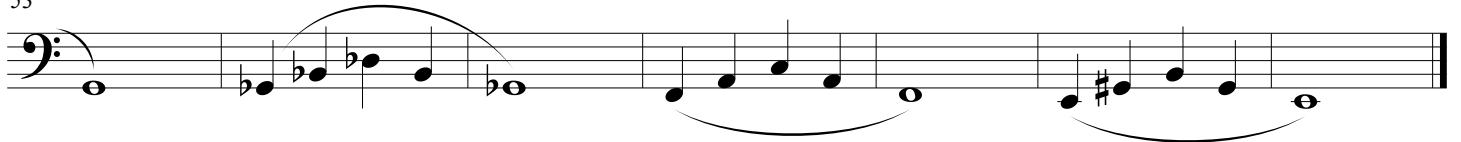
④



⑤



53



⑥



67



Tone Builders

2
7

First staff of music for exercise 7, starting with a bass clef and a key signature of one flat. It contains three measures of music, each with a slur over a sequence of notes.

80

Second staff of music for exercise 7, starting with a bass clef and a key signature of one flat. It contains three measures of music, each with a slur over a sequence of notes.

86

Third staff of music for exercise 7, starting with a bass clef and a key signature of one flat. It contains three measures of music, each with a slur over a sequence of notes.

92

Fourth staff of music for exercise 7, starting with a bass clef and a key signature of one flat. It contains three measures of music, each with a slur over a sequence of notes.

8

Fifth staff of music for exercise 8, starting with a bass clef and a key signature of one flat. It contains three measures of music, each with a slur over a sequence of notes.

104

Sixth staff of music for exercise 8, starting with a bass clef and a key signature of one flat. It contains three measures of music, each with a slur over a sequence of notes.

110

Seventh staff of music for exercise 8, starting with a bass clef and a key signature of one flat. It contains three measures of music, each with a slur over a sequence of notes.

116

Eighth staff of music for exercise 8, starting with a bass clef and a key signature of one flat. It contains three measures of music, each with a slur over a sequence of notes.